










reviewed 10/25/17 

10/23/2017

**Worklist: 1963**

<u>LAB CASE</u>	<u>ITEM</u>	<u>TASK ID</u>	<u>DESCRIPTION</u>	
M2017-1827	1	98144	AM 14 Blood Cannabinoids by	
M2017-2593	1	98145	AM 14 Blood Cannabinoids by	
M2017-2620	1	98146	AM 14 Blood Cannabinoids by	
M2017-2661	1	98147	AM 14 Blood Cannabinoids by	
P2017-1522	1	98148	AM 14 Blood Cannabinoids by	
P2017-1544	1	98149	AM 14 Blood Cannabinoids by	
P2017-1575	2	98150	AM 14 Blood Cannabinoids by	
P2017-1664	1	98151	AM 14 Blood Cannabinoids by	

# Worklist Report

Worklist Path:	C:\MassHunter\ISP Methods\worklists\TS Combined 102417.wkl
Date Modified:	10/24/2017 02:52:42 PM
Date Printed:	10/24/2017 02:53:15 PM

## Worklist Run Parameters

Operator Name:	62340
Run Type:	Standard Start
Part of Method to Run:	Acquisition Only
Execution for Acquisition-DA:	Synchronous
Acquisition Method Path:	C:\MassHunter\ISP Methods\Acquisition
DA Method Path:	D:\MassHunter\methods
Data File Path:	C:\MassHunter\Data\2017\Combined\102417 TS
Pre-Worklist Script:	---
Post-Worklist Script:	SCP_InstrumentStandby(){MH_Acq_Scripts.exe}
Acquisition Clean Up Script:	---
Overlapped Injection:	No
Clear sample selection after run:	Yes
Wait Time for Ready(Min):	10
Threshold Disk Value(GB):	10
Comment:	---

## Plate Barcode Information

Sample positions verified. TS

Plate	Barcode
P1	
P2	

## Worklist Table

Sample Position	Sample Name	Method	Data File	Sample Type	Level Name	Comment	Info.
P1-A1	Blank	Benzos_Z_Drugs_ACN_FA_ISP_2017.m	BZ-Blank.d	Blank		AM 6.1.1 Benzo and Z by LCQQQ	Blood
P1-A1	Blank	Benzos_Z_Drugs_ACN_FA_ISP_2017.m	BZ-Blank1-r001.d	Blank		AM 6.1.1 Benzo and Z by LCQQQ	Blood
P1-A1	Blank	Benzos_Z_Drugs_ACN_FA_ISP_2017.m	BZ-Blank2-r001.d	Blank		AM 6.1.1 Benzo and Z by LCQQQ	Blood
P1-A2	10 ngmL	Benzos_Z_Drugs_ACN_FA_ISP_2017.m	BZ-10 ngmL-r001.d	Calibration	2	AM 6.1.1 Benzo and Z by LCQQQ	
P1-A3	25 ngmL	Benzos_Z_Drugs_ACN_FA_ISP_2017.m	BZ-25 ngmL_r001.d	Calibration	3	AM 6.1.1 Benzo and Z by LCQQQ	
P1-A4	50 ngmL	Benzos_Z_Drugs_ACN_FA_ISP_2017.m	BZ-50 ngmL_r001.d	Calibration	4	AM 6.1.1 Benzo and Z by LCQQQ	
P1-A5	100 ngmL	Benzos_Z_Drugs_ACN_FA_ISP_2017.m	BZ-100 ngmL_r001.d	Calibration	5	AM 6.1.1 Benzo and Z by LCQQQ	

Sample Position	Sample Name	Method	Data File	Sample Type	Level Name	Comment	Info.
P1-A6	500 ngmL	Benzos_Z_Drugs_ACN_FA_ISP_2017.m	BZ-500 ngmL_r001.d	Calibration	6	AM 6.1.1 Benzo and Z by LCQQQ	
P1-A7	1000 ngmL	Benzos_Z_Drugs_ACN_FA_ISP_2017.m	BZ-1000 ngmL_r001.d	Calibration	7	AM 6.1.1 Benzo and Z by LCQQQ	
P1-A1	Blank	Benzos_Z_Drugs_ACN_FA_ISP_2017.m	BZ-Carryover blank1_r001.d	Blank		AM 6.1.1 Benzo and Z by LCQQQ	
P1-A8	Negative Blood Control	Benzos_Z_Drugs_ACN_FA_ISP_2017.m	BZ-NC-B_r001.d	Sample		AM 6.1.1 Benzo and Z by LCQQQ	UTAK Negative Whole Blood LOT B1013
P1-A9	Positive Blood Control	Benzos_Z_Drugs_ACN_FA_ISP_2017.m	BZ-PC-B_r001.d	Sample		AM 6.1.1 Benzo and Z by LCQQQ	Benzodiazepines Mix Cerilliant lot FE012413-02 in UTAK LOT B1013
P1-A1	Blank	Benzos_Z_Drugs_ACN_FA_ISP_2017.m	BZ-Carryover blank-C2016-1060-1_r001.d	Blank		AM 6.1.1 Benzo and Z by LCQQQ	
P1-B1	M2017-2620	Benzos_Z_Drugs_ACN_FA_ISP_2017.m	BZ-M2017-2620.d	Sample		AM 6.1.1 Benzo and Z by LCQQQ	Blood
P1-B2	M2017-2634	Benzos_Z_Drugs_ACN_FA_ISP_2017.m	BZ-M2017-2634.d	Sample		AM 6.1.1 Benzo and Z by LCQQQ	
P1-B3	P2017-1464	Benzos_Z_Drugs_ACN_FA_ISP_2017.m	BZ-P2017-1464.d	Sample		AM 6.1.1 Benzo and Z by LCQQQ	Blood
P1-B4	P2017-1576	Benzos_Z_Drugs_ACN_FA_ISP_2017.m	BZ-P2017-1576.d	Sample		AM 6.1.1 Benzo and Z by LCQQQ	
P1-B5	P2017-1626	Benzos_Z_Drugs_ACN_FA_ISP_2017.m	BZ-P2017-1626.d	Sample		AM 6.1.1 Benzo and Z by LCQQQ	Blood
P1-B6	P2017-1637	Benzos_Z_Drugs_ACN_FA_ISP_2017.m	BZ-P2017-1637.d	Sample		AM 6.1.1 Benzo and Z by LCQQQ	Blood
P1-A1	Blank	Benzos_Z_Drugs_ACN_FA_ISP_2017.m	BZ-end of run blank.d	Blank		AM 6.1.2 Cannabinoids by LCQQQ	
P1-D1	Blank	isp blood cannabinoids Poky 2016-3.m	MJ-Blank1-r001.d	Blank		AM 6.1.2 Cannabinoids by LCQQQ	
P1-D1	Blank	isp blood cannabinoids Poky 2016-3.m	MJ-Blank2-r001.d	Blank		AM 6.1.2 Cannabinoids by LCQQQ	
P1-D2	Blood: 1_5 ngmL	isp blood cannabinoids Poky 2016-3.m	MJ-CAL1-r001.d	Calibration	1	AM 6.1.2 Cannabinoids by LCQQQ	c-THC @5ng/mL, all others @1 ng/mL
P1-D3	Blood: 2_10 ngmL	isp blood cannabinoids Poky 2016-3.m	MJ-CAL2_r001.d	Calibration	2	AM 6.1.2 Cannabinoids by LCQQQ	c-THC @10ng/mL, all others @2 ng/mL
P1-D4	Blood: 5_25 ngmL	isp blood cannabinoids Poky 2016-3.m	MJ-CAL3_r001.d	Calibration	3	AM 6.1.2 Cannabinoids by LCQQQ	c-THC @25ng/mL, all others @5 ng/mL

Sample Position	Sample Name	Method	Data File	Sample Type	Level Name	Comment	Info.
P1-D5	Blood: 10_50 ng/mL	isp blood cannabinoids Poky 2016-3.m	MJ-CAL4_r001.d	Calibration	4	AM 6.1.2 Cannabinoids by LCQQQ	c-THC @50ng/mL, all others @10 ng/mL
P1-D6	Blood: 25_125 ng/mL	isp blood cannabinoids Poky 2016-3.m	MJ-CAL5_r001.d	Calibration	5	AM 6.1.2 Cannabinoids by LCQQQ	c-THC @125ng/mL, all others @25 ng/mL
P1-D7	Blood: 50_250 ng/mL	isp blood cannabinoids Poky 2016-3.m	MJ-CAL6_r001.d	Calibration	6	AM 6.1.2 Cannabinoids by LCQQQ	c-THC @250ng/mL, all others @50 ng/mL
P1-D1	Blank	isp blood cannabinoids Poky 2016-3.m	MJ-Carryover blank1_r001.d	Blank		AM 6.1.2 Cannabinoids by LCQQQ	
P1-D8	Blood Negative Control	isp blood cannabinoids Poky 2016-3.m	MJ-NC-r001.d	Sample		AM 6.1.2 Cannabinoids by LCQQQ	Negative Blood UTAK Lot B1013
P1-D9	PC1	isp blood cannabinoids Poky 2016-3.m	MJ-POS Ctrl 1-r001.d	Sample		AM 6.1.2 Cannabinoids by LCQQQ	Positive Control-UTAK B1013 + WS060716
P1-D1	Blank	isp blood cannabinoids Poky 2016-3.m	MJ-Blank 3_r001.d	Blank		AM 6.1.2 Cannabinoids by LCQQQ	
P1-E1	M2017-1827	isp blood cannabinoids Poky 2016-3.m	M2017-1827.d	Sample		AM 6.1.2 Cannabinoids by LCQQQ	Blood
P1-E2	M2017-2593	isp blood cannabinoids Poky 2016-3.m	M2017-2593.d	Sample		AM 6.1.2 Cannabinoids by LCQQQ	
P1-E3	M2017-2620	isp blood cannabinoids Poky 2016-3.m	M2017-2620.d	Sample		AM 6.1.2 Cannabinoids by LCQQQ	Blood
P1-E4	M2017-2661-1	isp blood cannabinoids Poky 2016-3.m	M2017-2661-1.d	Sample		AM 6.1.2 Cannabinoids by LCQQQ	
P1-E5	PC2	isp blood cannabinoids Poky 2016-3.m	MJ-POS Ctrl 2-r001.d	Sample		AM 6.1.2 Cannabinoids by LCQQQ	Positive Control-UTAK B1013 + WS060716
P1-E6	P2017-1522	isp blood cannabinoids Poky 2016-3.m	P2017-1522.d	Sample		AM 6.1.2 Cannabinoids by LCQQQ	Blood
P1-E7	P2017-1544	isp blood cannabinoids Poky 2016-3.m	P2017-1544.d	Sample		AM 6.1.2 Cannabinoids by LCQQQ	
P1-E8	P2017-1575	isp blood cannabinoids Poky 2016-3.m	P2017-1575.d	Sample		AM 6.1.2 Cannabinoids by LCQQQ	Blood
P1-E9	P2017-1664	isp blood cannabinoids Poky 2016-3.m	P2017-1664.d	Sample		AM 6.1.2 Cannabinoids by LCQQQ	
P1-D1	Blank	isp blood cannabinoids Poky 2016-3.m	MJ-Blank4-r001.d	Blank		AM 6.1.2 Cannabinoids by LCQQQ	Blood

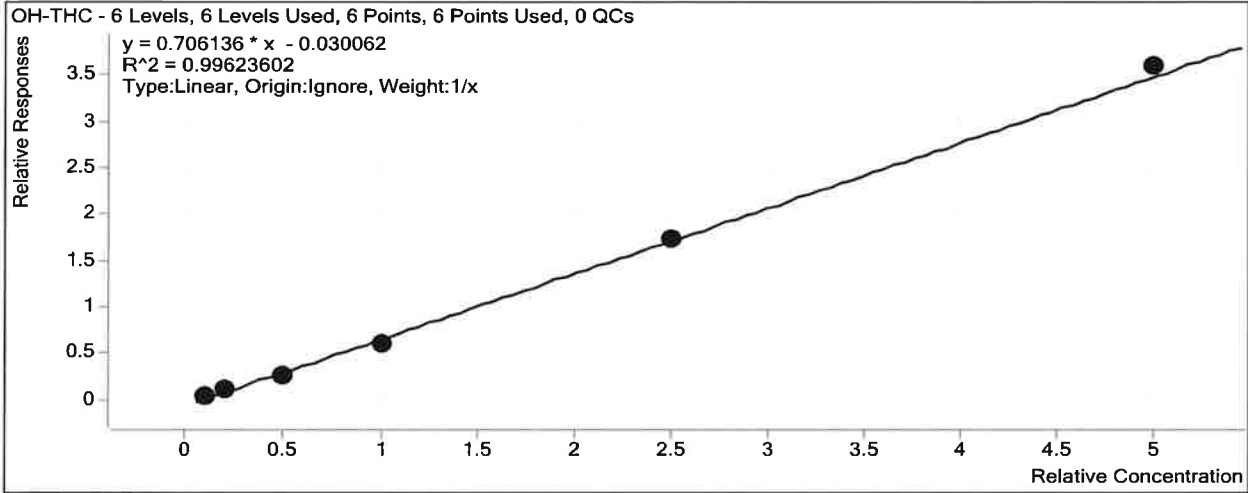
# ISP Forensics Calibration Curve Report

**Batch Data Path** C:\MassHunter\Data\2017\Combined\102417 TS\QuantResults\102417 TS CANN.batch.bin

**Last Calib Update** 10/25/2017 8:20 AM

**Analyst Name** ISP TOX

**Target Compound** OH-THC  
**Internal Standard** OH-THC-d3



Sample	Level	Enabled	Exp Conc	Final Conc	Accuracy
Blood: 1_5 ng/mL	1	<input checked="" type="checkbox"/>	1	1.2	119.0
Blood: 2_10 ng/mL	2	<input checked="" type="checkbox"/>	2	2.0	102.4
Blood: 5_25 ng/mL	3	<input checked="" type="checkbox"/>	5	4.2	84.7
Blood: 10_50 ng/mL	4	<input checked="" type="checkbox"/>	10	9.1	90.6
Blood: 25_125 ng/mL	5	<input checked="" type="checkbox"/>	25	25.2	100.7
Blood: 50_250 ng/mL	6	<input checked="" type="checkbox"/>	50	51.3	102.6

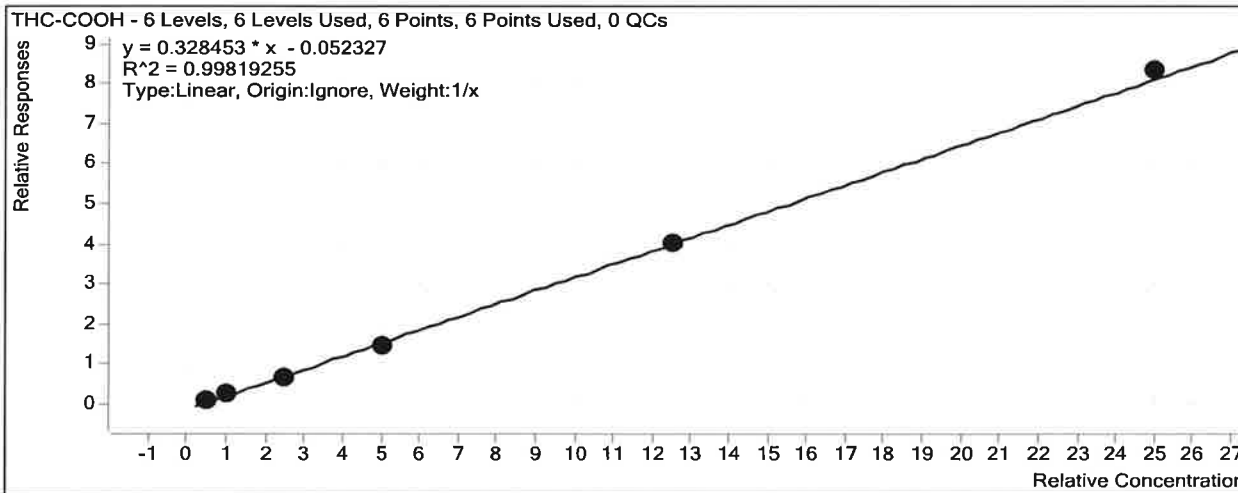
TS

# ISP Forensics Calibration Curve Report

**Batch Data Path** C:\MassHunter\Data\2017\Combined\102417 TS\QuantResults\102417 TS CANN.batch.bin

**Last Calib Update** 10/25/2017 8:20 AM      **Analyst Name** ISP TOX

**Target Compound** *THC-COOH*  
**Internal Standard** *THC-COOH-d3*



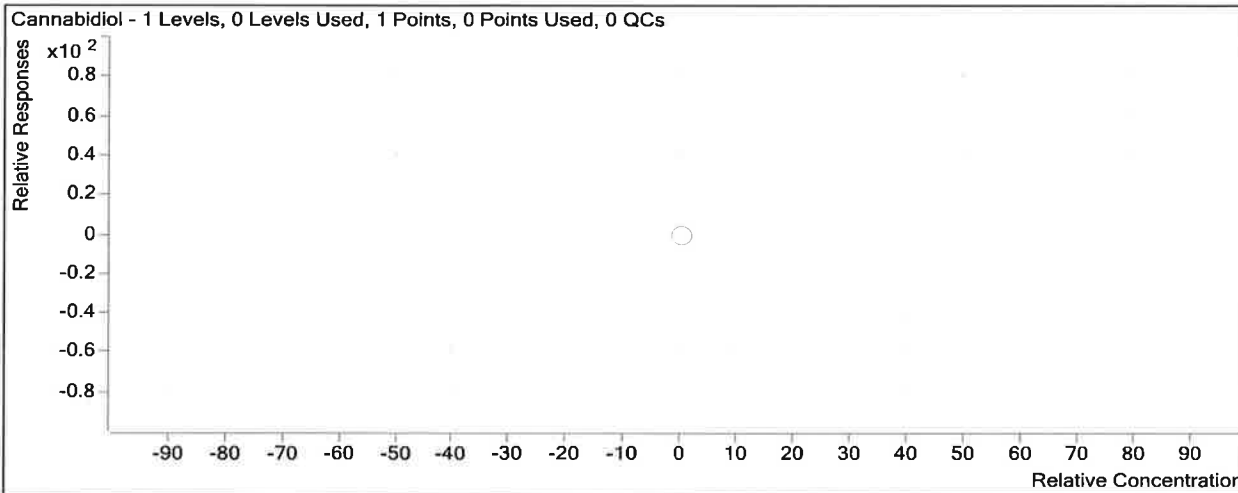
Sample	Level	Enabled	Exp Conc	Final Conc	Accuracy
Blood: 1_5 ng/mL	1	<input checked="" type="checkbox"/>	5	5.7	114.5
Blood: 2_10 ng/mL	2	<input checked="" type="checkbox"/>	10	10.0	99.8
Blood: 5_25 ng/mL	3	<input checked="" type="checkbox"/>	25	22.6	90.4
Blood: 10_50 ng/mL	4	<input checked="" type="checkbox"/>	50	46.6	93.3
Blood: 25_125 ng/mL	5	<input checked="" type="checkbox"/>	125	124.9	99.9
Blood: 50_250 ng/mL	6	<input checked="" type="checkbox"/>	250	255.1	102.1

# ISP Forensics Calibration Curve Report

**Batch Data Path** C:\MassHunter\Data\2017\Combined\102417 TS\QuantResults\102417 TS CANN.batch.bin

**Last Calib Update** 10/25/2017 8:20 AM **Analyst Name** ISP TOX

**Target Compound** *Cannabidiol*  
**Internal Standard** *Cannabidiol-d3* \*Compound not evaluated TS



Sample	Level	Enabled	Exp Conc	Final Conc	Accuracy
Blood: 1_5 ng/mL	1	<input type="checkbox"/>	1	0.0	0.0

# ISP Forensics Calibration Curve Report

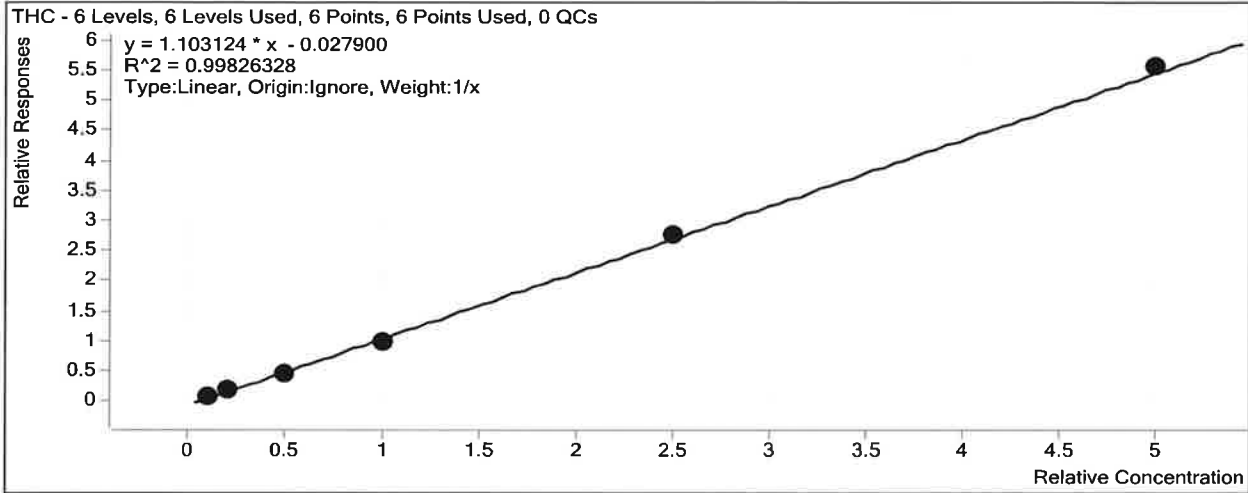
**Batch Data Path** C:\MassHunter\Data\2017\Combined\102417 TS\QuantResults\102417 TS CANN.batch.bin

**Last Calib Update** 10/25/2017 8:20 AM

**Analyst Name** ISP TOX

**Target Compound** *THC*

**Internal Standard** *THC-d3*



Sample	Level	Enabled	Exp Conc	Final Conc	Accuracy
Blood: 1_5 ng/mL	1	<input checked="" type="checkbox"/>	1	1.2	115.0
Blood: 2_10 ng/mL	2	<input checked="" type="checkbox"/>	2	2.0	98.0
Blood: 5_25 ng/mL	3	<input checked="" type="checkbox"/>	5	4.6	91.3
Blood: 10_50 ng/mL	4	<input checked="" type="checkbox"/>	10	9.3	92.8
Blood: 25_125 ng/mL	5	<input checked="" type="checkbox"/>	25	25.4	101.5
Blood: 50_250 ng/mL	6	<input checked="" type="checkbox"/>	50	50.7	101.4



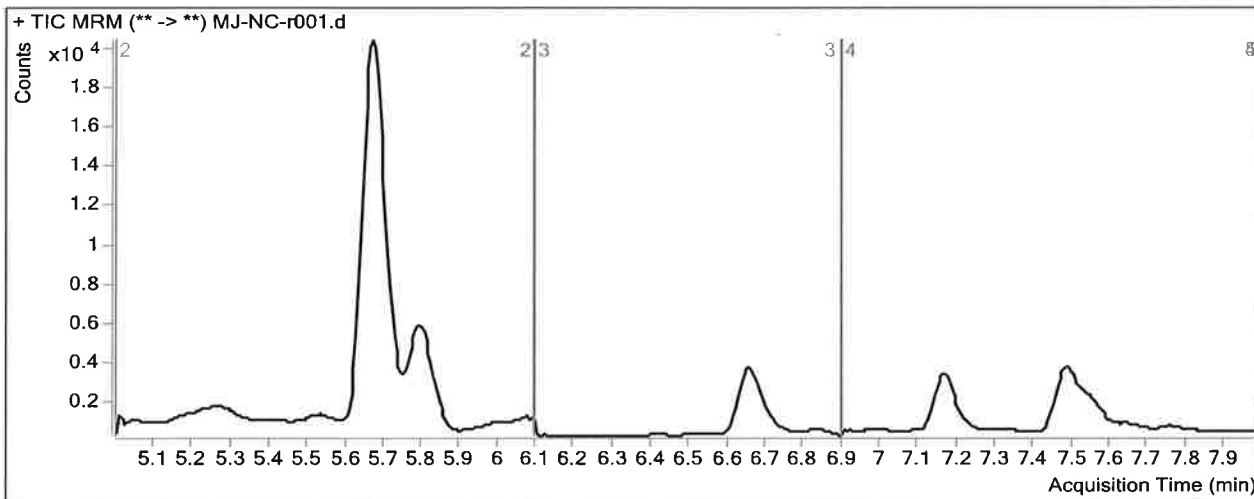
# ISP FORENSICS Pocatello Cannabinoid Analysis Report

**Batch Data Path** C:\MassHunter\Data\2017\Combined\102417 TS\QuantResults\102417 TS CANN.batch.bin  
**Analysis Time** 10/25/2017 8:45 AM **Analyst Name** ISPUser  
**Report Time** 10/25/2017 8:46 AM **Reporter Name** ISPUser  
**Last Calib Update** 10/25/2017 8:45 AM **Batch State** Processed

### Analysis Info

**Acq Time** 2017-10-24 23:17 **Data File** MJ-NC-r001.d  
**Sample Type** Sample **Sample Name** Blood Negative Control  
**Dilution** 1 **Acq Method** isp blood cannabinoids Poky 2016-3.m  
**Position** P1-D8 **Sample Info** Negative Blood UTAK Lot B1013  
**Inj Vol** -1 **Comment** AM 6.1.2 Cannabinoids by LCQQQ

### Sample Chromatogram



### Results

Compound	ISTD Compound	RT	Response	ISTD Resp	Resp Ratio	Final Conc
OH-THC	OH-THC-d3	5.617	945	72356	0.0131	0.6108

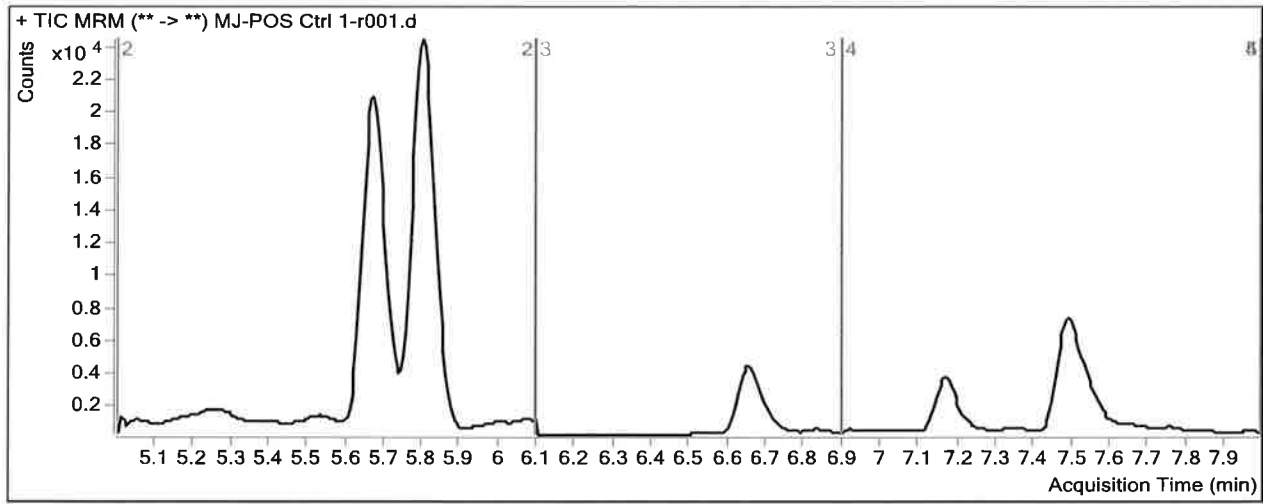
# ISP FORENSICS Pocatello Cannabinoid Analysis Report

**Batch Data Path** C:\MassHunter\Data\2017\Combined\102417 TS\QuantResults\102417 TS CANN.batch.bin  
**Analysis Time** 10/25/2017 8:45 AM **Analyst Name** ISPUser  
**Report Time** 10/25/2017 8:46 AM **Reporter Name** ISPUser  
**Last Calib Update** 10/25/2017 8:45 AM **Batch State** Processed

### Analysis Info

**Acq Time** 2017-10-24 23:30 **Data File** MJ-POS Ctrl 1-r001.d  
**Sample Type** Sample **Sample Name** PC1  
**Dilution** 1 **Acq Method** isp blood cannabinoids Poky 2016-3.m  
**Position** P1-D9 **Sample Info** Positive Control- UTAK B1013 + WS060716  
**Inj Vol** -1 **Comment** AM 6.1.2 Cannabinoids by LCQQQ

### Sample Chromatogram



### Results

Compound	ISTD Compound	RT	Response	ISTD Resp	Resp Ratio	Final Conc
OH-THC	OH-THC-d3	5.622	939	73439	0.0128	0.6067
THC-COOH	THC-COOH-d3	5.799	10799	7810	1.3828	43.6925
THC	THC-d3	7.490	6305	8493	0.7424	6.9829

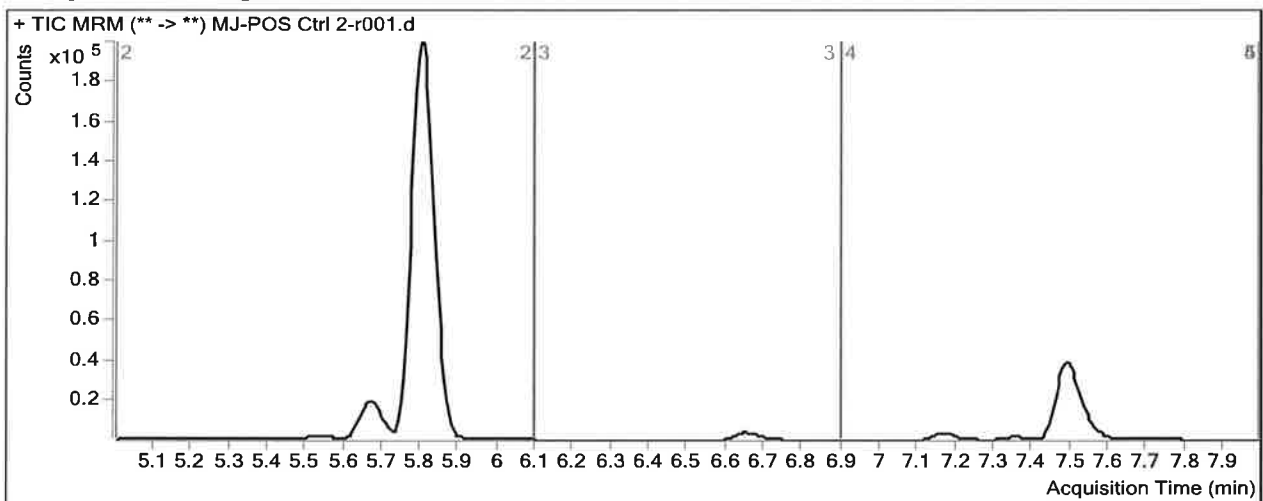
# ISP FORENSICS Pocatello Cannabinoid Analysis Report

**Batch Data Path** C:\MassHunter\Data\2017\Combined\102417 TS\QuantResults\102417 TS CANN.batch.bin  
**Analysis Time** 10/25/2017 8:45 AM **Analyst Name** ISPUser  
**Report Time** 10/25/2017 8:47 AM **Reporter Name** ISPUser  
**Last Calib Update** 10/25/2017 8:45 AM **Batch State** Processed

### Analysis Info

**Acq Time** 2017-10-25 00:50 **Data File** MJ-POS Ctrl 2-r001.d  
**Sample Type** Sample **Sample Name** PC2  
**Dilution** 1 **Acq Method** isp blood cannabinoids Poky 2016-3.m  
**Position** P1-E5 **Sample Info** Positive Control- UTAK B1013 + WS060716  
**Inj Vol** -1 **Comment** AM 6.1.2 Cannabinoids by LCQQQ

### Sample Chromatogram



### Results

Compound	ISTD Compound	RT	Response	ISTD Resp	Resp Ratio	Final Conc
OH-THC	OH-THC-d3	5.617	322	70235	0.0046	0.4906
THC-COOH	THC-COOH-d3	5.804	112910	7448	15.1591	463.1227
Cannabidiol	Cannabidiol-d3	6.659	171	4889	0.0350	
THC	THC-d3	7.490	68462	7629	8.9742	81.6054